

SUT-3BR/SUT-3BRE

UNPACK AND IDENTIFY THE FOLLOWING PARTS.

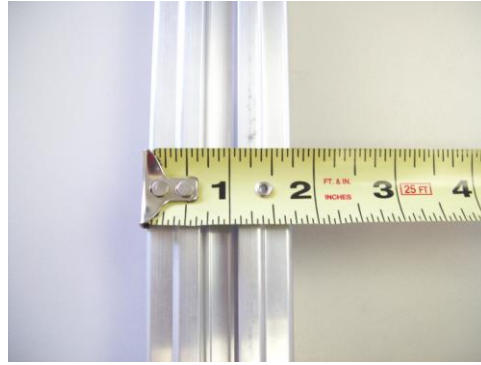
Failure to follow the assembly instructions could result in serious injury.

Incorrect assembly or modifications to your rack will void any specific or implied warranty.

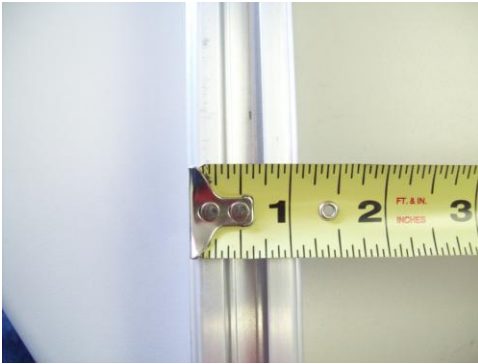
For questions or assistance assembling your dolly call 800-282-5042



**10 cross bars at 72 inches.
4 uprights at 66 inches.**



1 3/4 inch “wide” side.



1 1/4 inch “narrow” side.



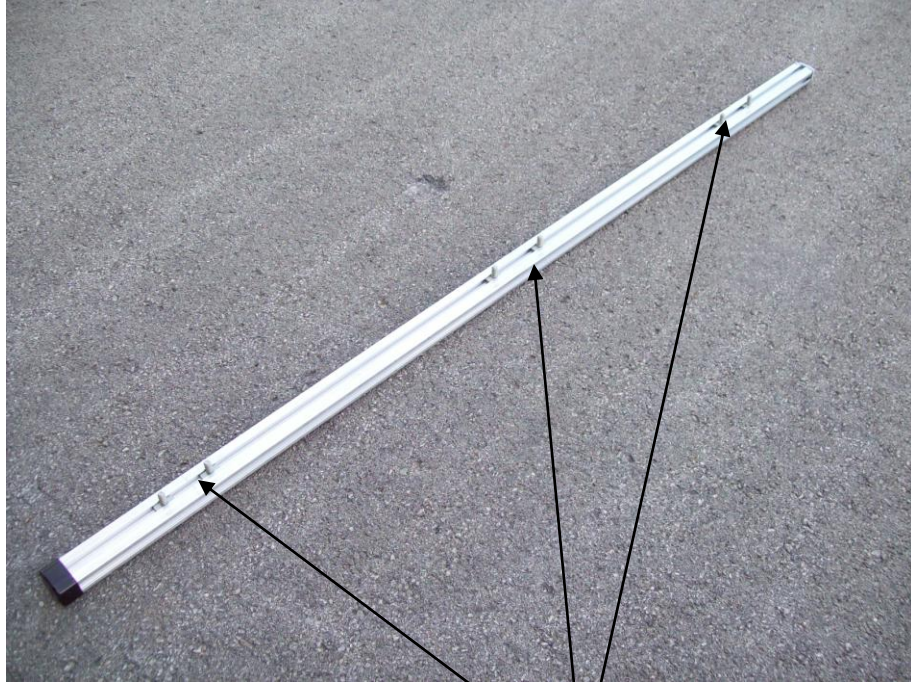
T-bolt and lock nut – 80 pieces each.



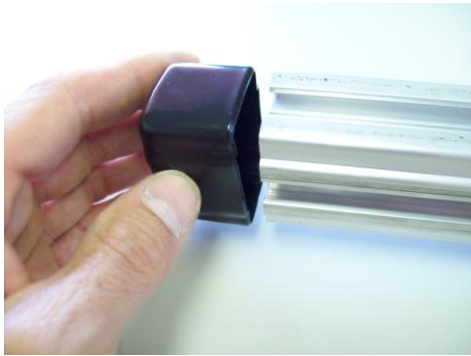
**3 inch angle – 40 pieces. One leg is
slightly longer than the other.**



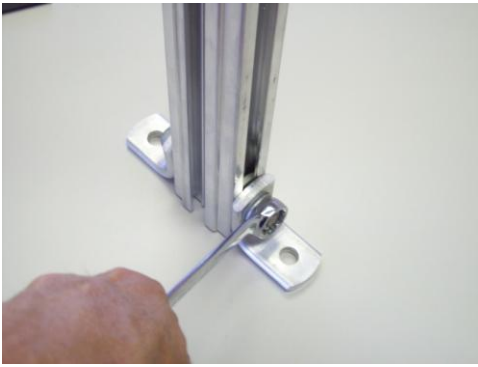
Vinyl cap and aluminum foot – 4 each.



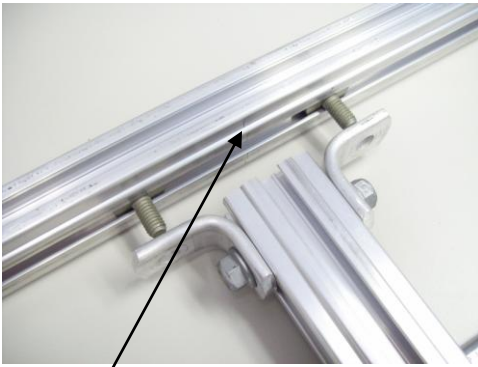
Lay out the four 66 inch uprights and install 6 T-bolts in the wide side and 4 T-bolts in the narrow side of each. (Pencil marks.)



Install a vinyl cap and aluminum foot on each end.



Install the shorter leg of the 3 inch angles to the ends of the 10 cross bars.



(Pencil marks.) Install 3 cross bars to the T-bolts in the wide sides of the uprights. Align the center of the cross bars with the pencil marks on the uprights.



Finished rack section. Repeat for the other side.



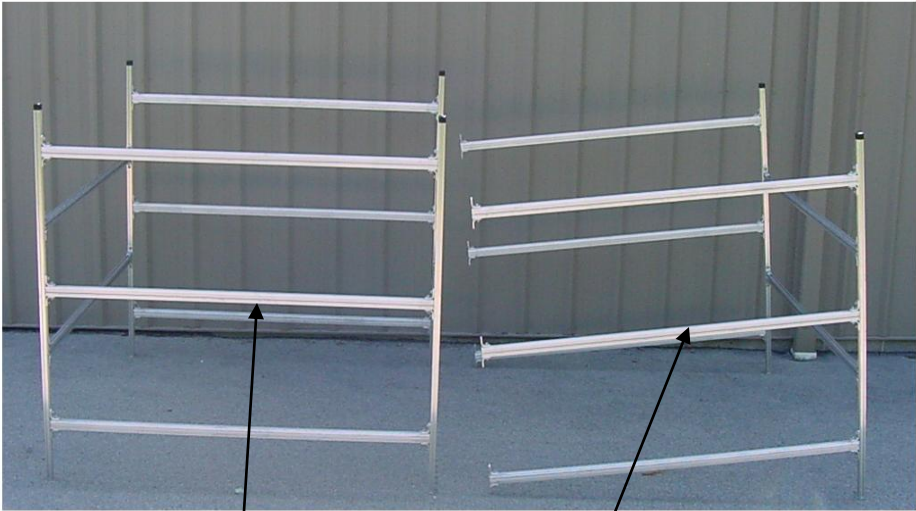
Install the 4 cross bars that hold the two rack sections together on the “narrow” side of the uprights at the pencil marks.



Finished rack



SUT-3BRE



SUT-3BR shown with SUT-3BRE ready to connect.