

Rear Bunk Kit Option Installation for SUT-220-S & SUT-350-S Trailex Trailers

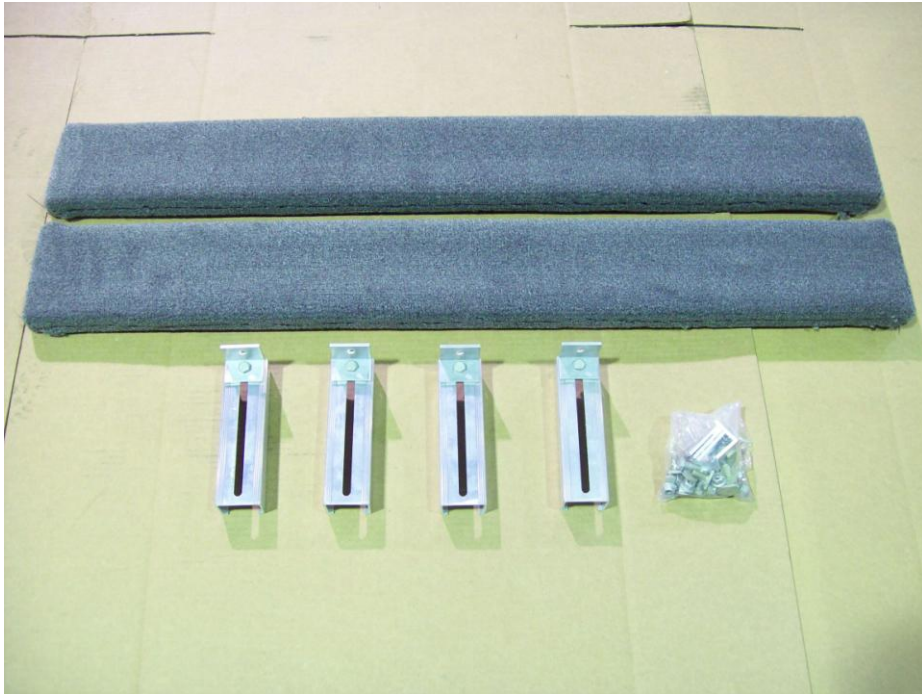


**Kit Option Includes Two 48" Padded Bunks
and hardware**

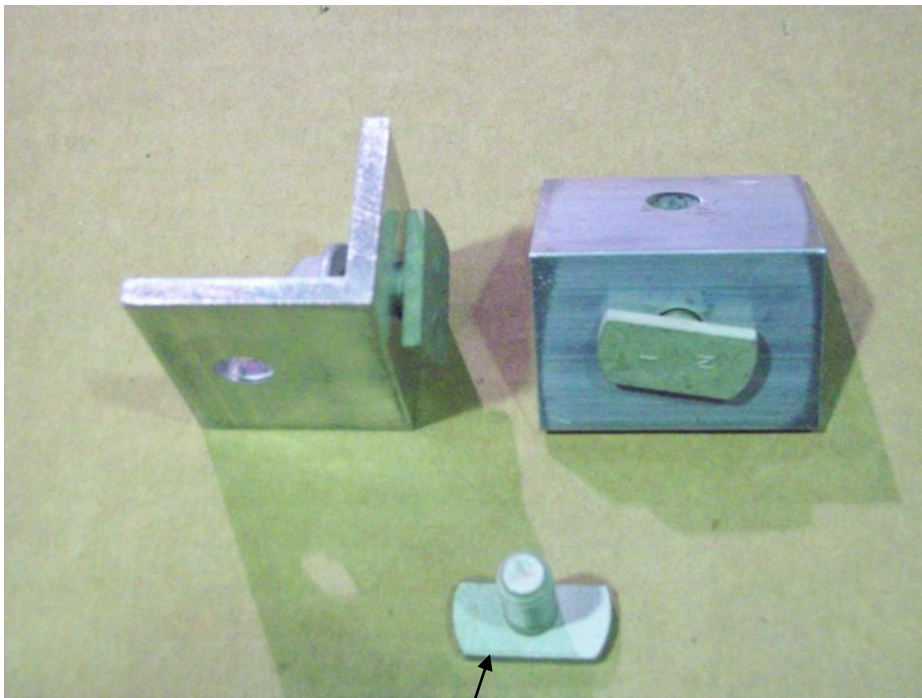
**This replaces the Rear Cradle supplied with
the trailer. DO NOT install two cradles and
the Rear Bunks together. Install the Bunks to
the rear and one Cradle in the Front.**

**Using a cradle in the center can cause
problems and could even damage your boat
or trailer**

Padded cradle installation



Locate padded cradles, brackets, and hardware.

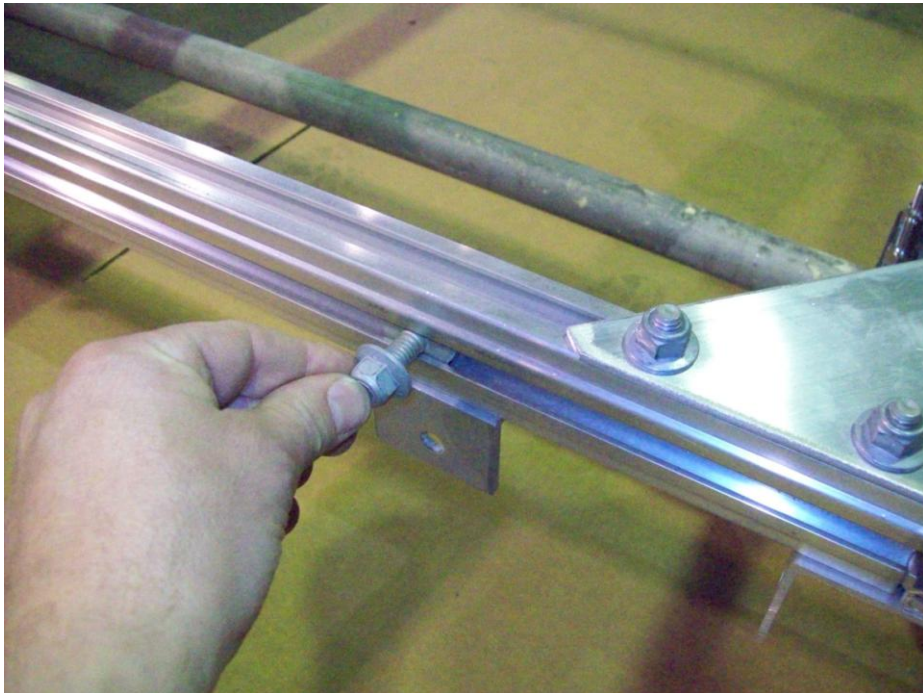


Repair T-bolt

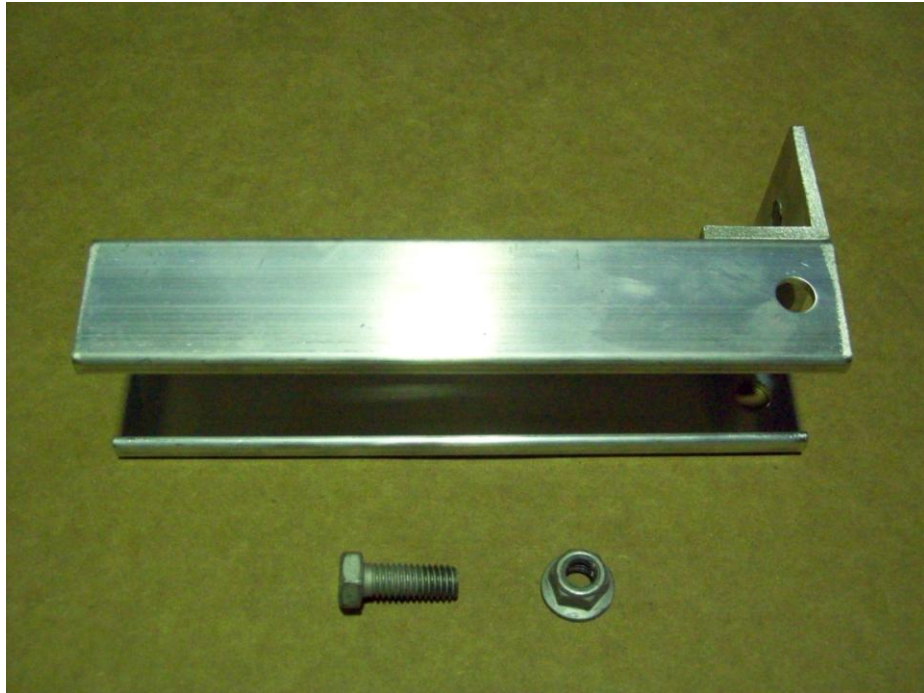
Locate the 4 angle brackets and repair T-bolts. Install the repair T-bolt on the short end of the angle as shown.



Install two of the angle brackets on the front cross member and two on the rear as shown. Also angle brackets can be installed on the top of the cross member as shown below.



Slide T-bolt over on cross member and align them with the angle brackets.



Cradle bracket shown with 1" bolt and nut.

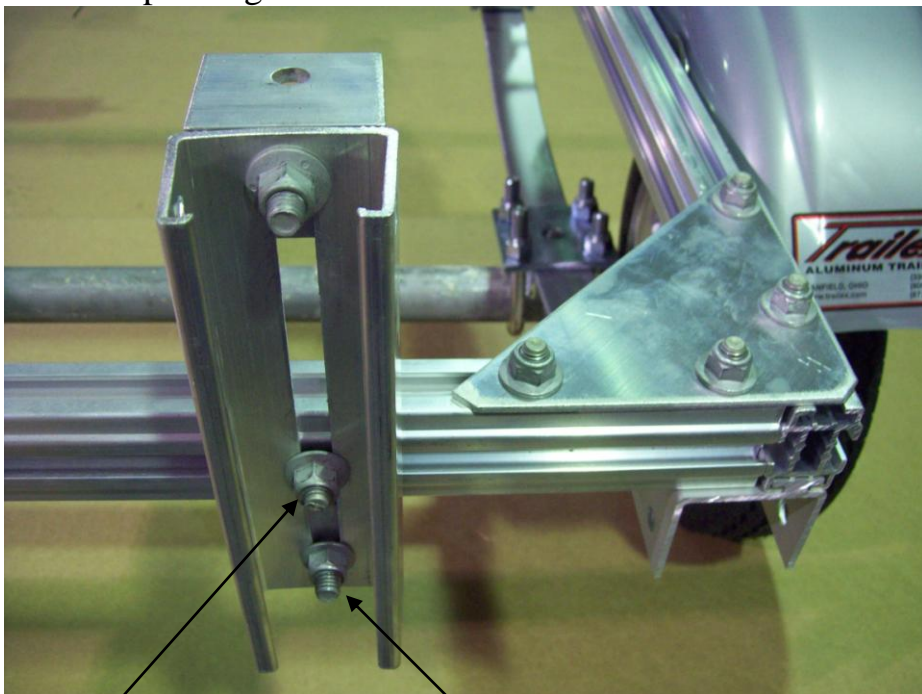


Shown on the bottom



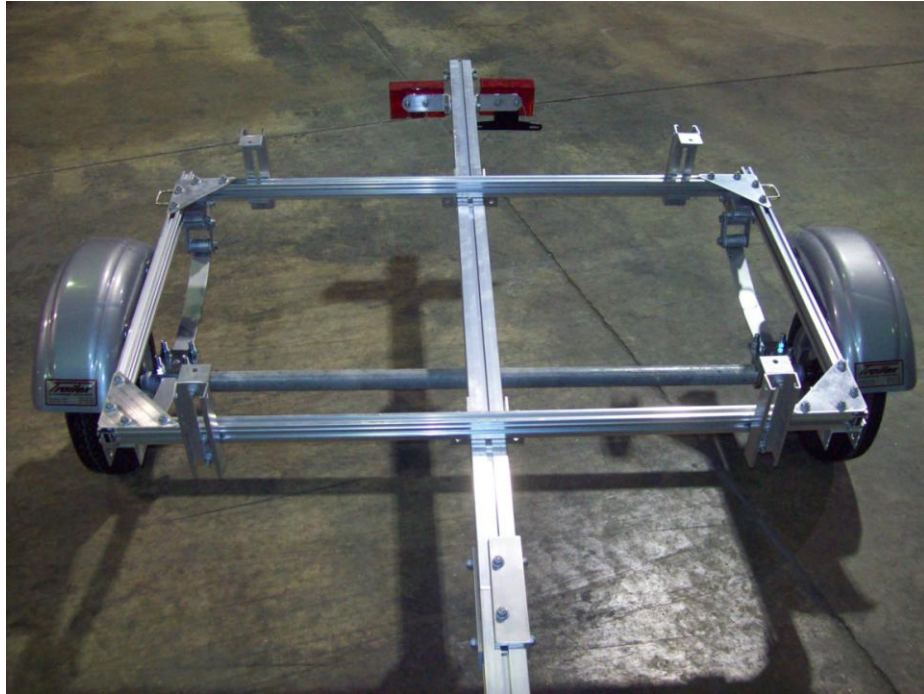
Shown on the top

The angle bracket can be mounted either on the bottom or the top of the cross member depending on the hull of the boat.

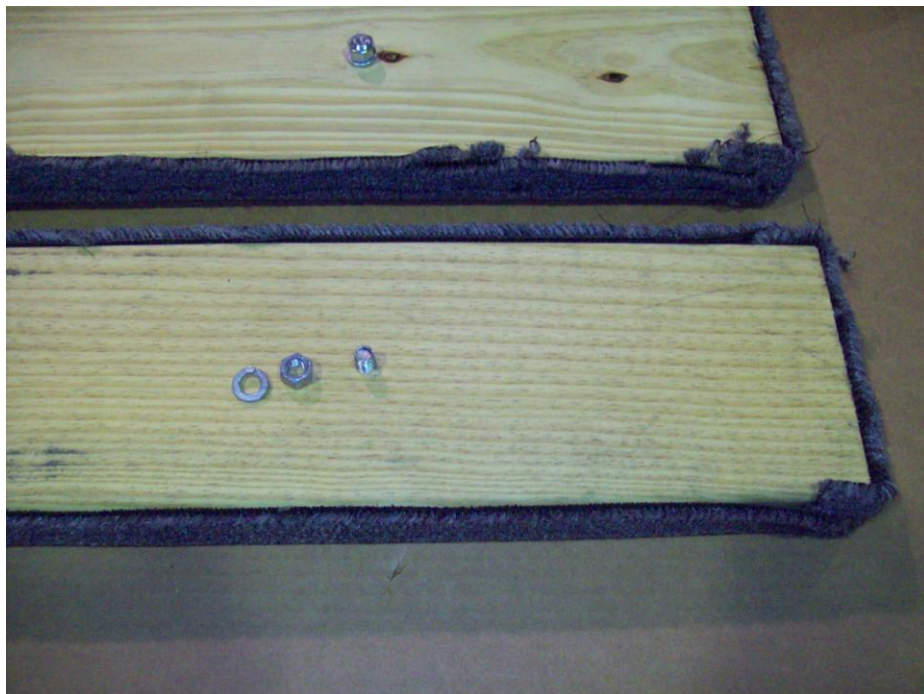


T-bolt 1" bolt

Install cradle bracket onto T-bolts on the front and rear cross members. Then install a 1" bolt through the angle bracket at the bottom. Position brackets and then tighten nuts.



Your trailer should look like this at this point.



Take the nuts and lock washers off the bottom of the padded cradles so they can be installed on the angle brackets.



Install the padded cradles on the brackets as shown. Next reinstall the lock washers and nuts then tighten.



The padded cradle holders will have to be adjusted for the boat after the trailer is finished.