



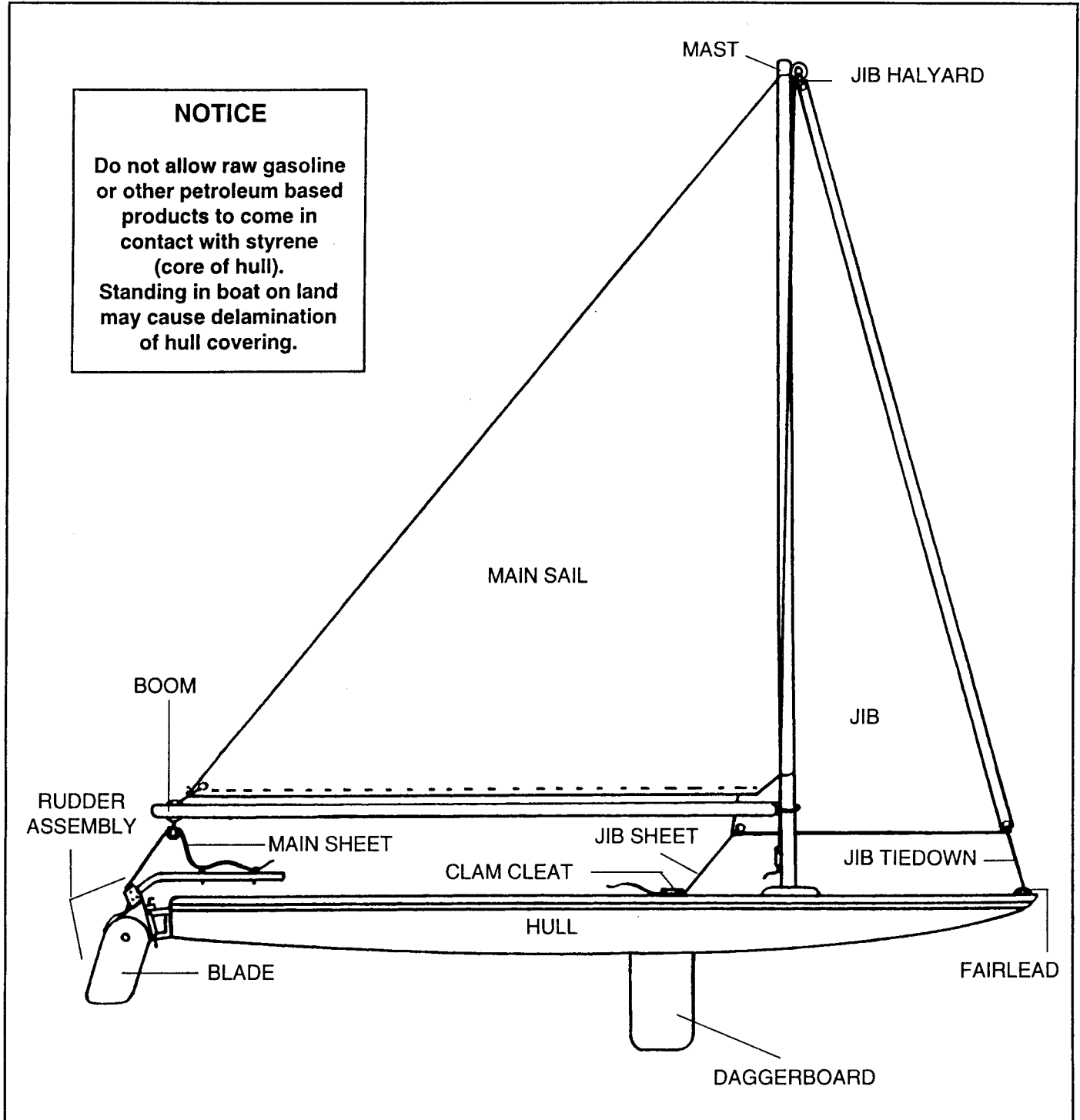
website - www.castlecraft.com
 PO # 3, Braidwood, IL 60408
 815-458-6216 Telephone
 888-274-8490 Toll Free



SNARK BOATS

SEA SKIMMER MODEL SB 195 OWNERS MANUAL

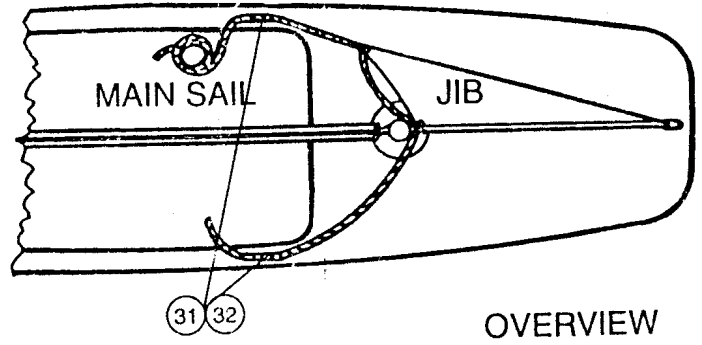
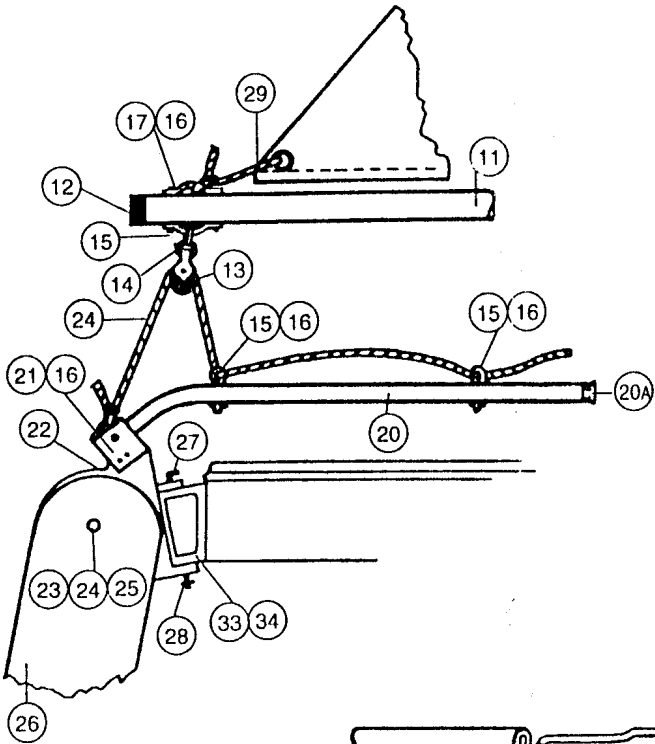
NOTICE
 Do not allow raw gasoline or other petroleum based products to come in contact with styrene (core of hull). Standing in boat on land may cause delamination of hull covering.



SPECIFICATIONS

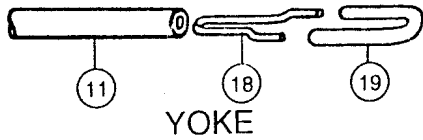
Length.....	12'	Sail Area (Main).....	55 sq. ft.
Beam.....	.39"	(Jib).....	15 sq. ft.
Crew Capacity (People & Gear).....		475 lbs.	

DETAIL "A"

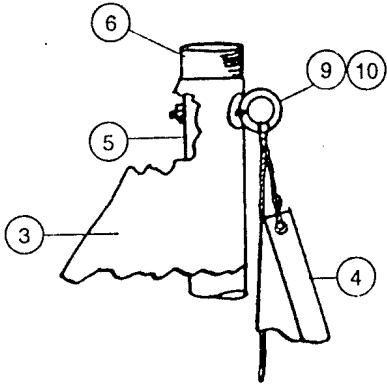


OVERVIEW

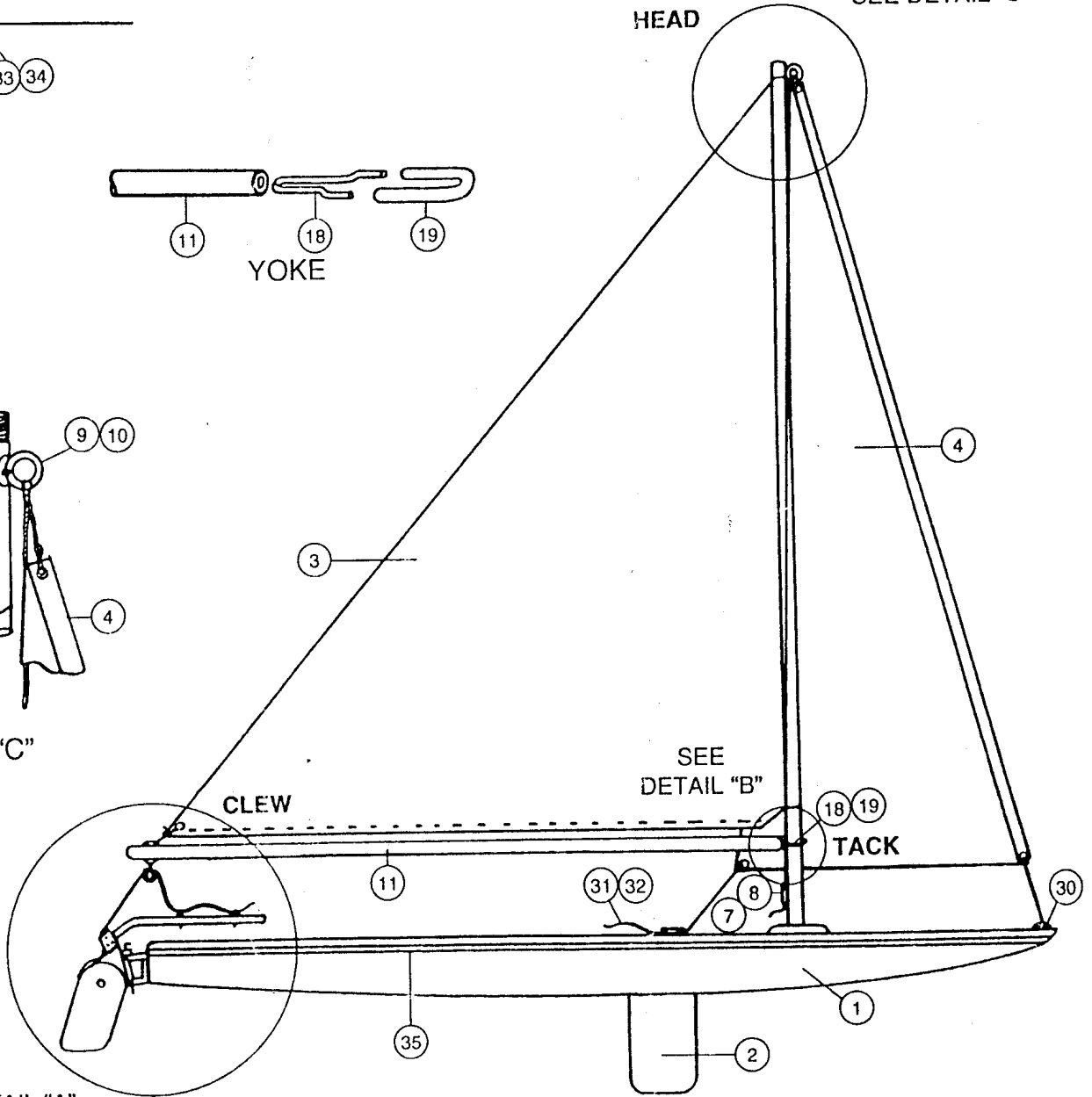
SEE DETAIL "C"



YOKE



DETAIL "C"



SEE DETAIL "B"

SEE DETAIL "A"

IMPORTANT - OWNER'S RESPONSIBILITY

BE SURE TO READ THE FOLLOWING
BEFORE LAUNCHING YOUR SAILBOAT

- A. Before operating your boat, read the Snark Sailing Manual carefully and be thoroughly familiar with the rules for safe operation.
- B. Do not overload your boat. Capacities are clearly stated on the Capacity Information Plate located on the transom of the boat.
- C. The Sea Skimmer is a small boat and caution must always be used, particularly when operating on open bodies of water where conditions can be unexpectedly severe. Never sail in severe weather. If your boat becomes difficult to control, head for shore.
- D. Always carry a Coast Guard approved personal flotation device for each person aboard and check with local authorities for regulations governing registration and operation of your boat. If capsizing should occur, stay with your boat until help arrives. It will not sink and it is far easier for rescuers to see than a lone swimmer.
- E. Transporting any boat on a cartop rack places considerable stress on the hull unless properly supported. Care must be used in adjusting straps, cables and clamps to prevent excessive pressure on the boat. The boat should rest inverted on its gunwales. Padding should be placed between the gunwales and the cartop carrier to prevent chaffing. In addition to securing the boat to the cartop carrier, the bow and stern should be secured to the vehicle to prevent longitudinal movement.
- F. To minimize needless wear and excessive scratching avoid dragging your boat over abrasive surfaces such as concrete launching ramps, coral or rocky beaches, garage floors, etc.
- G. The ArmorClad™ construction is exceptionally strong, but like other boat construction materials, it is not indestructible. The Sea Skimmer will absorb impact exceptionally well. However, severe localized impact can cause a fracture. (It is improbable that the fracture would affect more than the impacted skin and the adjacent foam.) Repairs can be made relatively easily using the ArmorClad™ Repair Kit.

CARE AND MAINTENANCE

YOUR BOAT: Your boat should be kept inside or covered when not in use. Avoid long periods of exposure to direct sunlight or weather.

CAUTION: If the ABS skin is fractured and the EPS foam core exposed, gasoline or oil spillage will cause damage. Repairs to the exposed area should be made immediately using the Epoxy Repair Kit available from Snark Boats.

CLEANING YOUR SNARK: Do not use solvents, detergents, polishes, waxes, or any other cleaners or protectants on your boat since these products can damage it. Use a soft brush and mild soap *only* to clean your boat. Suntan oils, cosmetics, and grease should be removed promptly to deter permanent stains.

REPLACEMENT PARTS LIST

NOTE: Items with Asterisk(*) must be shipped by commercial truck (freight collect). All other parts will be shipped UPS or USPS. Specifications are subject to change without notice.

Key No.	Qty.	Part No.	Description
1	1	HSB195	Hull Only *
2	1	62420	Daggerboard
3	1	40015	Main Sail
4	1	J40015	Jib Sail
5	1	28430	Mast (144") *
6	1	29130	Mast Cap
7	1	P22530	Line Cleat Assembly
8	2	22630	1/2" Tap Screw
9	1	P29730	Mast Eye Bolt Assembly
10	1	31220	1/4-20 Locknut
11	1	28330	Boom (106")
12	1	28830	Boom Cap
13	1	P26830	Pulley Block Assembly
14	1	27730	Spiral Ring
15	3	22730	10-32 Eye Bolt
16	4	61010	10-32 Locknut
17	1	27630	Nylon Line Anchor
18	1	P27330	Boom Yoke
19	1	30030	1/4" Plastic Hose
20	1	P74130	Tiller Assembly
20A	1	62470	Tiller Cap
21	1	60100	10-32 x 1 Machine Screw
22	1	P62020	Rudder Head Assembly
23	1	62560	5/16 Carriage Bolt
24	1	61620	5/16 Washer
25	1	62660	5/16 Locknut
26	1	62760	Rudder Blade
27	1	P62250	Rudder "L" Pin
28	1	60060	Cotter Pin
29	60'	28935	Line Set
30	1	24230	Boweye (Factory Installed)
31	2	P63630	Clam Cleat Assembly (Factory Installed)
32	4	40086	#10 x 1 - 3/4 Screw
33	1	P40000	Gudgeon Assembly (Factory Installed)
34	4	60900	#14 Screw
35	1	28030	Rubrail (Factory Installed)

